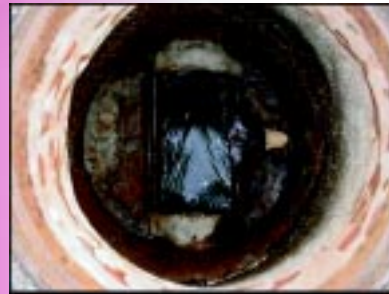


THE PROBLEM . . .

corrosion, infiltration, exfiltration, missing mortar joints, exposed rebar . . .

THE SOLUTION . . .

SpectraShield's 4 step Process can renew your aging infrastructure and restore your system.



Step 1

PREPARATION

Existing structures are properly prepared to remove soils and eroded surfaces. Water blasting provides a sound, reliable surface to receive the SpectraShield coating.



Step 2

MOISTURE BARRIER

The lining process begins with a barrier coat of silicone modified polyurea. This moisture barrier and adhesion coat becomes the inside layer of a multi-layer system that will form a stress-skin panel when complete.



Step 3

SURFACER

Next a surfacing coat of closed cell polyurethane foam is applied. The foam fills all the voids, eroded areas, bugholes, and missing mortar joints and restores the surface to its original emplacement.



Step 4

CORROSION BARRIER

Finally, a barrier coat of silicone modified polyurea provides the corrosion barrier as well as the third layer of the multi-layer stress-skin panel.

THE SYSTEM

SpectraShield™ is a multi-layered liner system specifically designed for manhole, wetwell and WWTP structures. Introduced in 1993, SpectraShield has been installed in thousands of structures throughout the United States and Caribbean. The multiple layering process eliminates groundwater intrusion, restores a structure's profile and provides a light reflecting, impervious barrier to environmental penetration. Multiple patents have been issued for the SpectraShield process. Installation is done by way of trenchless application (CIP) thereby causing minimal disruption to the surrounding environment. *A seven foot deep manhole can be lined in less than one hour.*

ADVANTAGES

- Eliminates Infiltration
- Restores Wall Surfaces
- Prevents Corrosion
- 100 Year Design Life
- 10 Year Warranty
- Trenchless Application

INSTALLATION

SpectraShield is installed through a network of Certified Licensed Applicators using the latest technology. SpectraShield Applicators are thoroughly trained in all facets of system preparation and application, as well as safety and quality control. Audits occur at least annually; this process assures uniform quality throughout the applicator network.

APPLICATIONS

- Manholes
- Wetwells
- Headworks
- Grit Chambers
- Clarifiers
- Aeration Basins
- Chlorine Contact Chambers
- Large Diameter Pipe

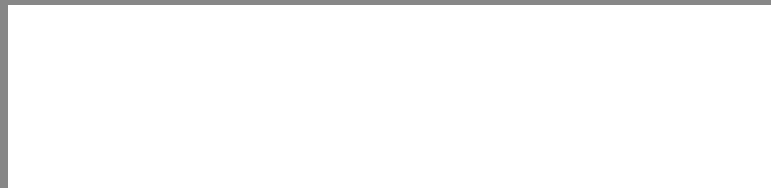
See the Difference

visit www.SpectraShield.com

pompanobeach·dunedin·hollyhill·winterpark·athensclarkcounty·dalton·lakecity·
insituform·welatka·largo·jacksonvilleelectricauthority·neptunebeach·homestead·
lancaster·tallahassee·atlanta·littleriverwater&sewerage·claycounty·valleyforge·
fernandinabeach·deltona·leesburgutilities·niceville·montgomery·merrittisland·
volusiacounty·hartsville·glynncounty·roanoke·savannah·nassaucounty·orlando·
tarponsprings·brevardcounty·georgetowncounty·clio·gulfport·mullins·paradise·
pinellascounty·birmingham·modena·deland·westpalmbeach·newportrichey·adel·
skidawayisland·jacksonvillebeach·hinesville·slidell·dillon·dunnellon·hainescity·
oceansprings·cocoabeach·westerncarolinasewerauthority·colfax·mandeville·
destin·grandstrandwater&sewer·wildwood·helena·greensboro·orangecounty·
brunswick·orange·park·stjohnscounty·newportrichey·hainescity·clewiston·dunes·
wellington·stcloud·orange·city·bushnell·pascocounty·reddingtonbeach·capecoral·
clearwater·portstlucie·marcoisland·palmcoast·lehighacres·plantcity·carmel·
cicero·jeffersonville·winchester·crawfordsville·anderson·logansport·washington·
stlouismsd·muncie·lickingcounty·jasper·madison·connersville·kankakee·marion·
butlercounty·fortville·greentown·lawrence·loogootee·hamiltoncounty·munster·
federalexpress·hanover·brooklyn·evansville·cloverdale·grandviewlake·chandler·
bloomington·chatham·terrehaute·generalmotors·lebanon·columbus·tippecity·
northernkentuckysanitation·brownsburg·danville·kewanee·pittsboro·bargerville·
lafayette·huntington·zionsville·chandler·irelandmadison·ftwayne·fallcreek·lapel·
huntingburg·fishers·cynthiana·geneva·remington·peru·westterrehaute·westfield·

There is a Difference

Not all polymeric lining systems are the same. The patented SpectraShield system is applied at a minimum thickness of 500 mils. Its flexibility allows it to move with the structure, such as in freeze/thaw climates, without cracking. The three layer "stress-skin panel" effect provides structural integrity. SpectraShield is uniquely different — there is no comparable system.



SPECTRA SHIELD

L I N E R S Y S T E M S



PROVEN

ECONOMICAL

RELIABLE

The Lining Solution for Wastewater Structures